

KLS martin
GROUP



marLED® V10/V16

That's how light should shine

www.klsmartin.com



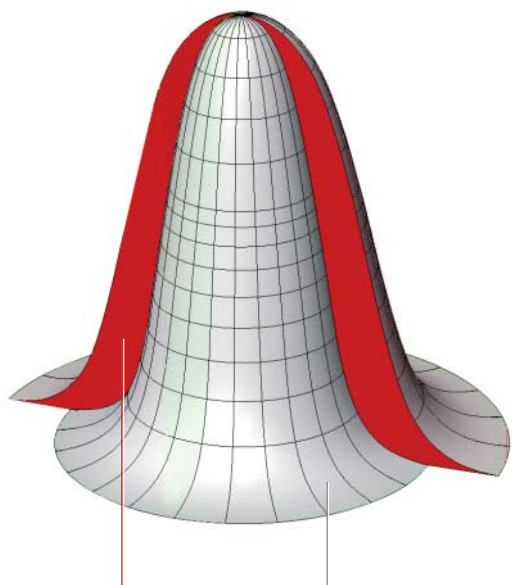
Among the LED operating lights the best ones in their class



High Performance Lighting

There are lots of LED operating lights available. None is like marLED® V10/V16: Latest-generation LED chips ensure unprecedented luminous efficacy with more than double the light output. This **H**igh **P**erformance **L**ighting makes marLED® V10/V16 the best in their class.

However, marLED® V10/V16 do not just boast exceptionally high performance. They also feature convincing ergonomics. Smart visual appearance, efficiency in use – that's how marLED® V10/V16 convince not only surgeons and their OR staff but also the juries of renowned international design awards.



High Performance Lighting typical illumination

HPL

Mixes the light where it is created: at source

As a result, color shadows don't stand a chance – and contour shadows certainly don't: marLED® V10/V16 mix the light exactly where it is created – and not in the surgical field. So thanks to minimal heat build-up, maximum luminous efficacy, and adjustable color temperature the two operating lights provide you with optimal viewing comfort at all times, even when you're having to cope with the most difficult surgical requirements.



Adapts the light field to suit your needs: VariLUX

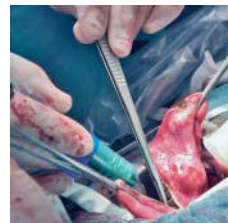
VariLUX

Every operation is unique. And that particularly applies to the surgical field and how it is illuminated. Oval or circular – that is what you as the surgeon decide for yourself. With VariLUX, marLED® V10/V16 provides you with unprecedented light field adaptation. Exactly as you require in the particular situation.

3800 K

4300 K

4800 K



ACT

Adaptive Color Temperature

marLED® V10/V16 illuminate the surgical field at the color temperature that can help you distinguish different tissue types more easily. We call it adaptive color temperature – or simply: ACT. It is a crucial aid to doing the right thing at the right time.



Intuitive control: with SensoGrip and SensoTouch



marLED® V10/V16 are lightweight so they are quick, easy and ergonomic to position. With SensoGrip you can move the main light and satellite into the positions you require in no time at all. Or you can use SensoTouch. The touchscreen control is attached to the gimbal and its operation is intuitive for any user.

Almost like being at home: the remote control with **marTouch®**



It is quite possible that you will dream of it when you're sitting in your armchair at home: marTouch® is extremely practical and provides you with all the information you need. With this remote control you can control the operating lights or the surgiCam® camera system from wherever you happen to be. And if you're not using the remote control, you simply return it to the docking station or to the wall mount.



Delivers excellent images in HD quality: **surgiCam®**

Here's how you may even set a trend: Combine marLED® V10/V16 with the surgiCam® camera system and transmit your operations to TFT flat screens or large projection screens in lecture theaters and conference rooms. surgiCam® enables you to consult with colleagues and experts or give them advice. And apart from that you can either evaluate the excellent recordings immediately or save the digital image data. With surgiCam® you – and your operation – are always in the picture. Needle-sharp.

Bright and dimmable: Everything is possible with **marLED®** V10/V16

marLED® V10/V16 will convince you in every respect. Because of their fantastic luminous efficacy. But also because they are dimmable. With these operating lights, backlighting during endoscopic surgery is not a problem but the solution.

Two that complement each other perfectly: Main light and satellite

marLED® V16 and marLED® V10 match each other perfectly because their shapes are coordinated. That provides you with greater freedom of movement when positioning the two lights and when combining with other equipment, e.g. surgiCam®.

Shape and surface: Aerodynamic in laminar flow

These lights will also convince you when installed under air supply ceilings with laminar flow. marLED® V10/V16 have smooth surfaces and small face areas. Ideal properties for integration into laminar flow systems.



Technical data

	marLED® V16	marLED® V10
Central illuminance (1 m distance)	160,000 lx	140,000 lx
Central illuminance electrically dimmable from/to	30 -100% / 5% (in backLite mode)	
Color temperature	3,800/4,300/4,800 K variable	
Color rendering index <small>[Ra (1-8)]</small>		95
Anticipated service life		40,000 h
Degree of turbulence (standard value 37.5% max.)	30%	29%
Light field diameter (d10, distance 1 m)	250-350 mm	230-330 mm

Due to manufacturing and measuring tolerances, all data relating to lighting systems has a tolerance of +/- 5%.

KLS Martin Group

KLS Martin Australia Pty Ltd.

Sydney · Australia
Tel. +61 2 9439 5316
australia@klsmartin.com

KLS Martin do Brasil Ltda.

São Paulo · Brazil
Tel. +55 11 3554 2299
brazil@klsmartin.com

KLS Martin Medical (Shanghai) International Trading Co., Ltd.

Shanghai · China
Tel. +86 21 5820 6251
china@klsmartin.com

KLS Martin India Pvt Ltd.

Chennai · India
Tel. +91 44 66 442 300
india@klsmartin.com

Martin Italia S.r.l.

Milan · Italy
Tel. +39 039 605 67 31
italia@klsmartin.com

Nippon Martin K.K.

Tokyo · Japan
Tel. +81 3 3814 1431
nippon@klsmartin.com

KLS Martin SE Asia Sdn. Bhd.

Penang · Malaysia
Tel. +604 505 7838
malaysia@klsmartin.com

Martin Nederland/Marned B.V.

Huizen · The Netherlands
Tel. +31 35 523 45 38
nederland@klsmartin.com

Gebrüder Martin GmbH & Co. KG

Moscow · Russia
Tel. +7 499 792-76-19
russia@klsmartin.com

Gebrüder Martin GmbH & Co. KG

Dubai · United Arab Emirates
Tel. +971 4 454 16 55
middleeast@klsmartin.com

KLS Martin UK Ltd.

London · United Kingdom
Tel. +44 1189 000 570
uk@klsmartin.com

KLS Martin LP

Jacksonville · Florida, USA
Tel. +1 904 641 77 46
usa@klsmartin.com

Gebrüder Martin GmbH & Co. KG

A company of the KLS Martin Group

KLS Martin Platz 1 · 78532 Tuttlingen · Germany
P.O. Box 60 · 78501 Tuttlingen · Germany
Tel. +49 7461 706-0 · Fax +49 7461 706-193
info@klsmartin.com · www.klsmartin.com

